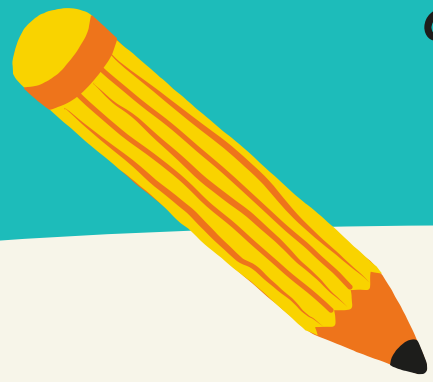


"The science of operations, as derived from mathematics more especially, is a science of itself, and has its own abstract truth and value."



Ada Lovelace was a mathematician, analyst, and metaphysician known as the **founder of scientific computing**. She frequently collaborated with her fellow mathematician and mentor, Charles Babbage. In her translation of a paper about Charles Babbage's proposed invention, the Analytical Engine, Ada Lovelace included her own notes and analysis. She wrote what is widely considered to be the first computer program. As a pioneering woman in the field of STEM, Ada Lovelace served as an inspiration for womenscientists who have done—and continue to do—trailblazing work.



The **Ada Programming Language**, which was developed by the Department of Defense in the 1980s, was named after Ada Lovelace.



ADA LOVELACE

THE FIRST COMPUTER PROGRAMMER

December 10, 1815—November 27, 1852

Her computer program was specifically designed to calculate the **Bernoulli numbers**, a sequence of rational numbers developed by mathematician **Jacob Bernoulli**.



DID YOU KNOW?

Ada Lovelace was the daughter of the famous Romantic poet, Lord Byron. The two of them never met, however.

Sources:

Klein, Christopher. "10 Things You May Not Know about Ada Lovelace." History.com, A&E Television Networks, 10 Dec. 2015, <https://www.history.com/news/10-things-you-may-not-know-about-ada-lovelace>.
"Ada Lovelace: The First Computer Programmer." Encyclopædia Britannica, Encyclopædia Britannica, Inc., <https://www.britannica.com/story/ada-lovelace-the-first-computer-programmer>.

**ADA BECOMES
KNOWN AS THE
WORLD'S FIRST
COMPUTER
PROGRAMMER.
(POSTHUMOUSLY,
AFTER 1843)**

**ADA'S
MOTHER
ENCOURAGES
HER TO
STUDY
SCIENCE AND
MATH. (1820S)**

**AT AGE 12,
ADA DESIGNS
A PLAN FOR A
FLYING
MACHINE.
(1828)**

**HER FATHER,
THE POET
LORD BYRON,
LEAVES WHEN
SHE IS A
BABY.
(1816)**

**ADA MEETS
CHARLES
BABBAGE,
WHO
INVENTED THE
"ANALYTICAL
ENGINE." (1833)**

**ADA WRITES
THE FIRST
COMPUTER
PROGRAM FOR
BABBAGE'S
MACHINE.
(1842)**

**ADA PUBLISHES
HER NOTES
EXPLAINING
HOW THE
MACHINE COULD
DO MORE THAN
CALCULATIONS.
(1843)**

**ADA
LOVELACE
IS BORN IN
LONDON,
ENGLAND.
(1815)**

**ADA
LOVELACE
DIES AT THE
AGE OF 36.
(1852)**



Ada Lovelace

Timeline